



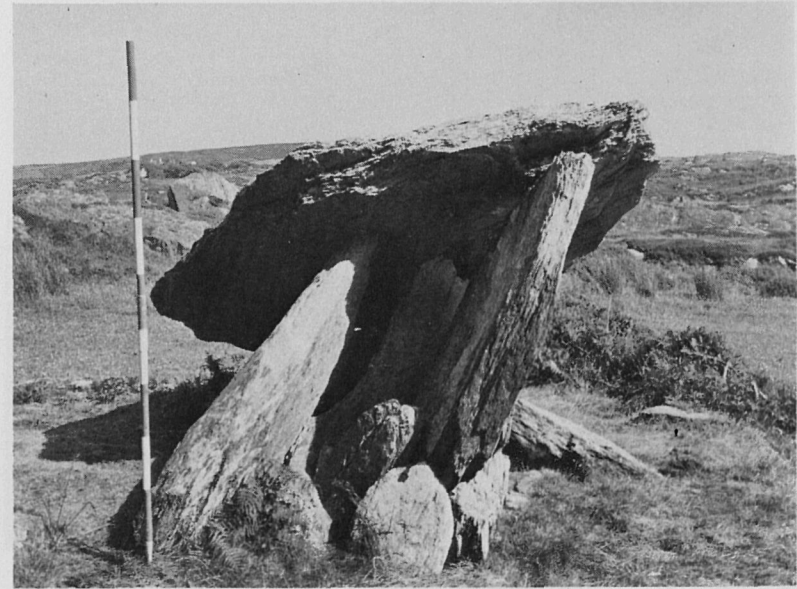
1. Arduaslough (Co. 59), from West.



2. Leenane (Co. 60), from North-West.

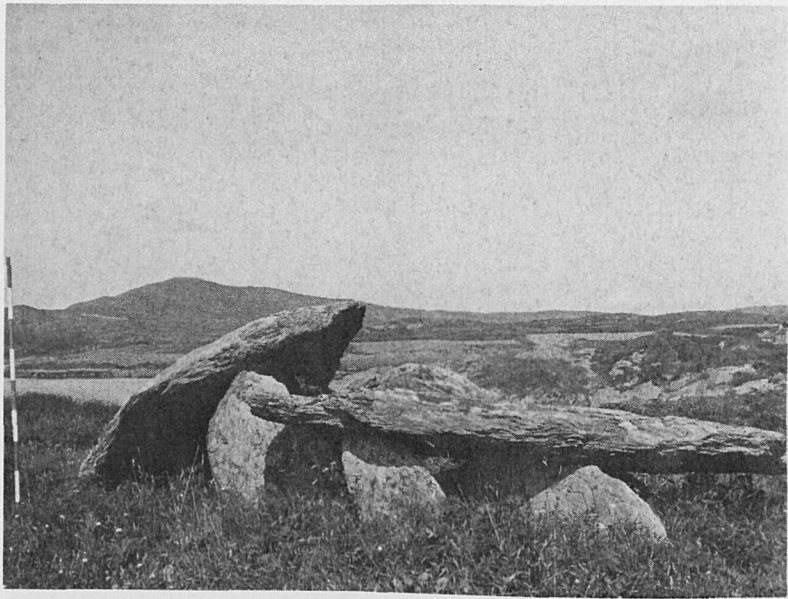


3. Arderrawinny (Co. 62), from North.

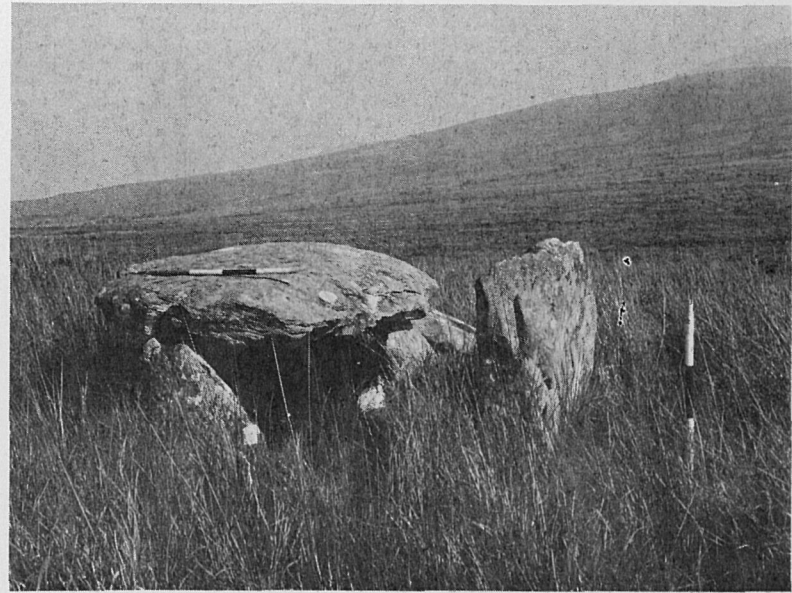


4. Arderrawinny (Co. 62), from East.

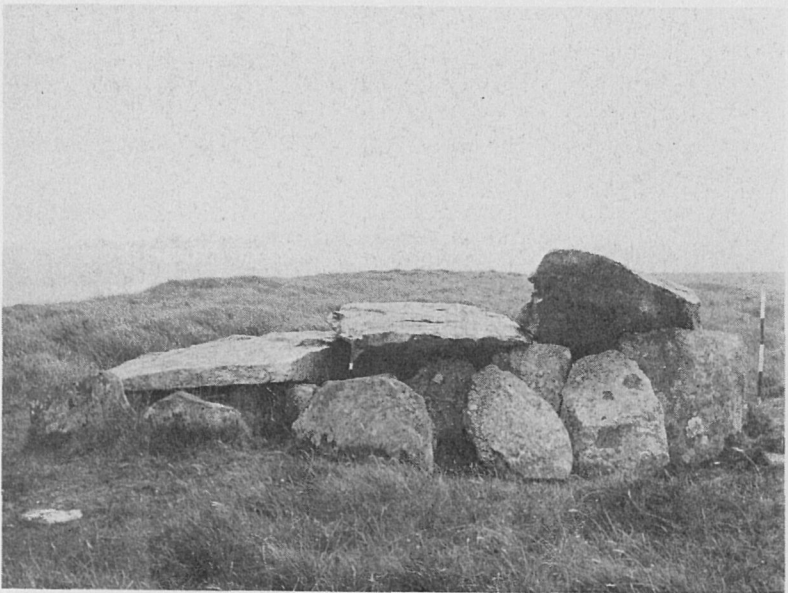




1. Altar (Co. 61), from South.



2. Ballyhoneen (Ke. 1), from West.



3. Caherard (Ke. 3), from West.



4. Caherard (Ke. 3), from North.





1. Maumnahaltora (Ke. 4), from North.



2. Maumnahaltora (Ke. 4), from West.



3. Maumnahaltora (Ke. 5), from South.



4. Maumnahaltora (Ke. 6), from East.





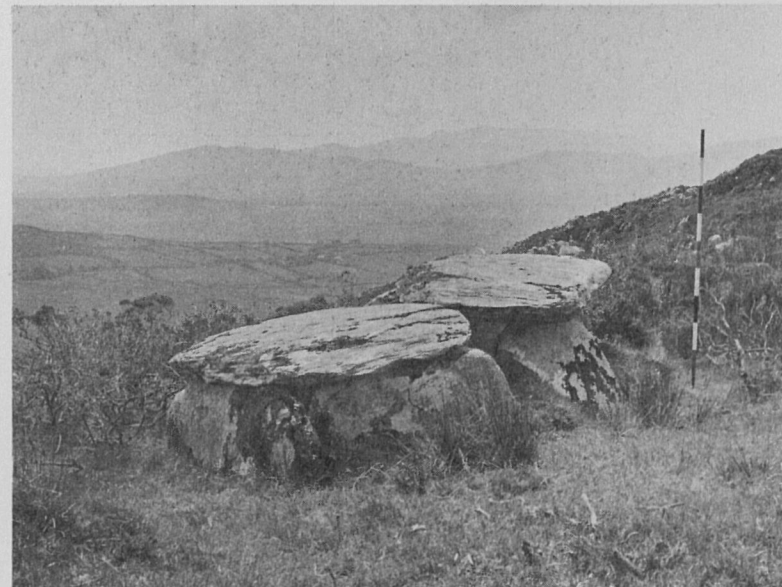
1. Derreen (Ke. 7), from East.



2. Doonmanagh (Ke. 8), from North.



3. Caherlehillan (Ke. 10), from West.



4. Caherlehillan (Ke. 10), from East.



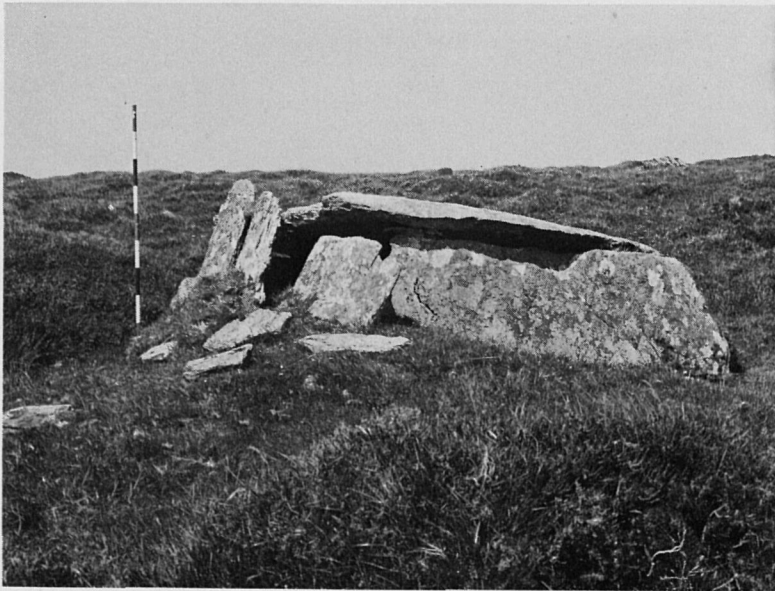




1. Caherlehillan (Ke. 9), from North.



2. Ballycarberry West (Ke. 12), from South-East.



3. Cool East (Ke. 11), from North-East.



4. Cool East (Ke. 11), from South.





1. Killoe (Ke. 13), from South-West.



2. Crohane (Ke. 14), from North.



3. Meenagulleen (Ke. 15), from West.



4. Coom (Ke. 16), from North.





1. Coomatloukane (Ke. 17), from East, during excavation.



2. Coomatloukane (Ke. 18), from West.

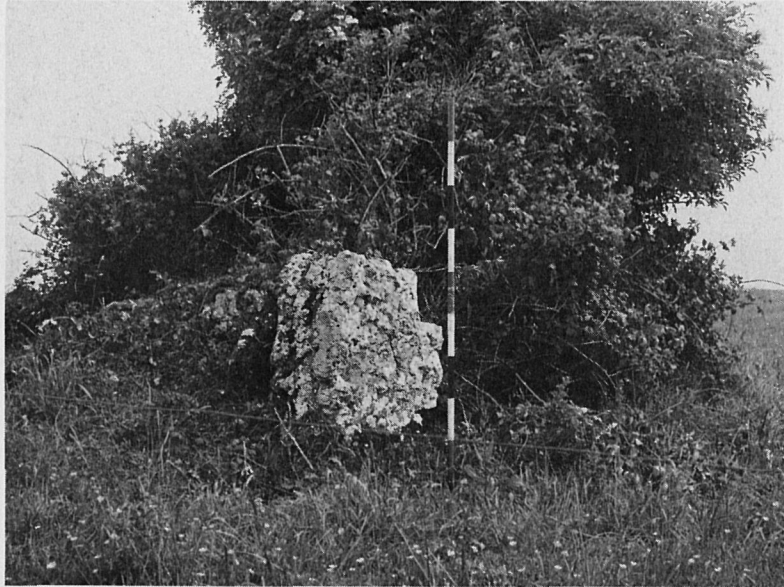


3. Coomatloukane (Ke. 19), from South.



4. Coomatloukane (Ke. 20), from North.





1. Clorhane (Li. 2), from South.



2. Killmacow (Li. 3), from North-East.



3. Lough Gur (Li. 4), from South.



4. Ballynagallagh (Li. 5), from West.







1. Cromwell (Li. 6), from South-East.



2. Mountrussell (Li. 7), from East.



3. Lackamore (Ti. 1), from West.

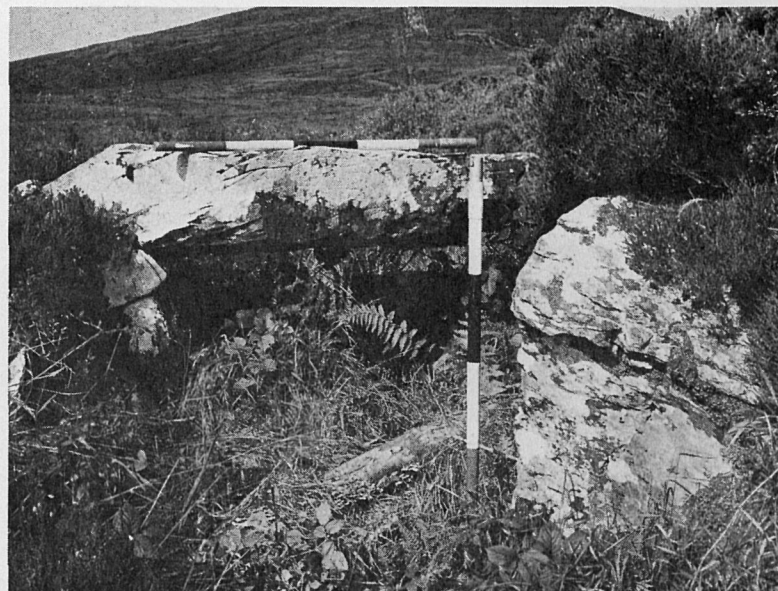


4. Lackamore (Ti. 1), from East.





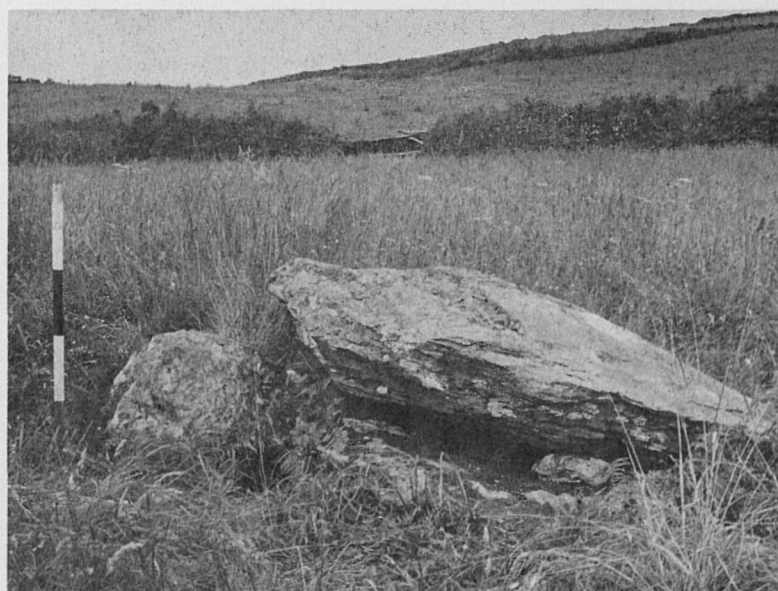
1. Cooleen (Ti. 2), from North.



2. Foilnamuck (Ti. 3), from South-West. (Septal in foreground).



3. Curreeny Commons (Ti. 4), from West.



4. Knockmaroe (Ti. 9), from South.





1. Bournadomeeny (Ti. 6), from North-East.



2. Bournadomeeny (Ti. 6), from North-West.



3. Shanballyedmond (Ti. 7), from North-West.

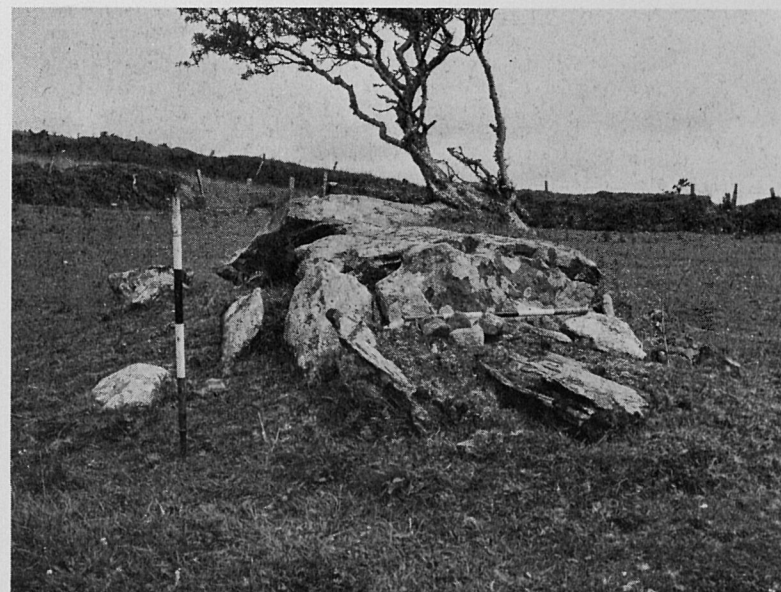


4. Shanballyedmond (Ti. 7), from North-East.





1. Knocknabansha (Ti. 8), from North.



2. Knockshanbrittas (Ti. 14), from West.



3. Loughbrack (Ti. 11), east end of gallery, from West.



4. Loughbrack (Ti. 11), west end of gallery, from East.







1. Knockcurraghboola Commons (Ti. 10), from West.



2. Knockcurraghboola Commons (Ti. 10), from South-East.

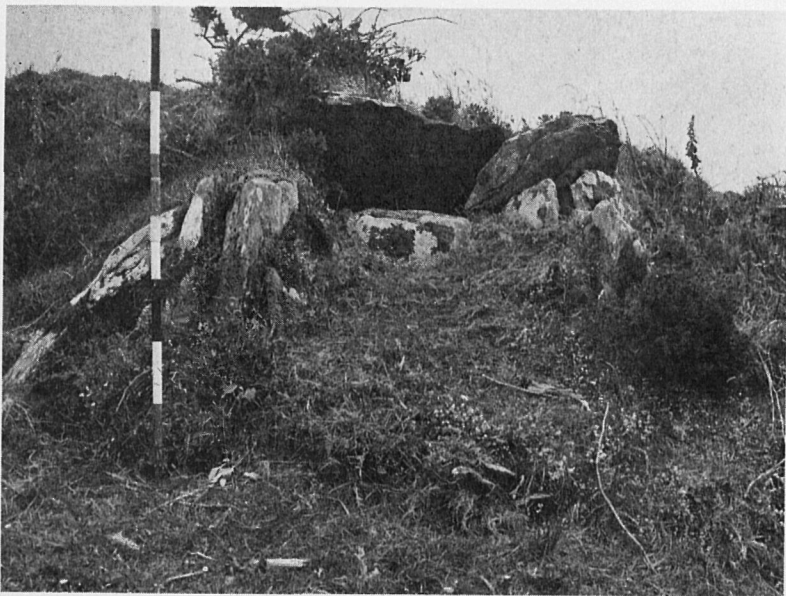


3. Knockcurraghboola Commons (Ti. 12), from East.

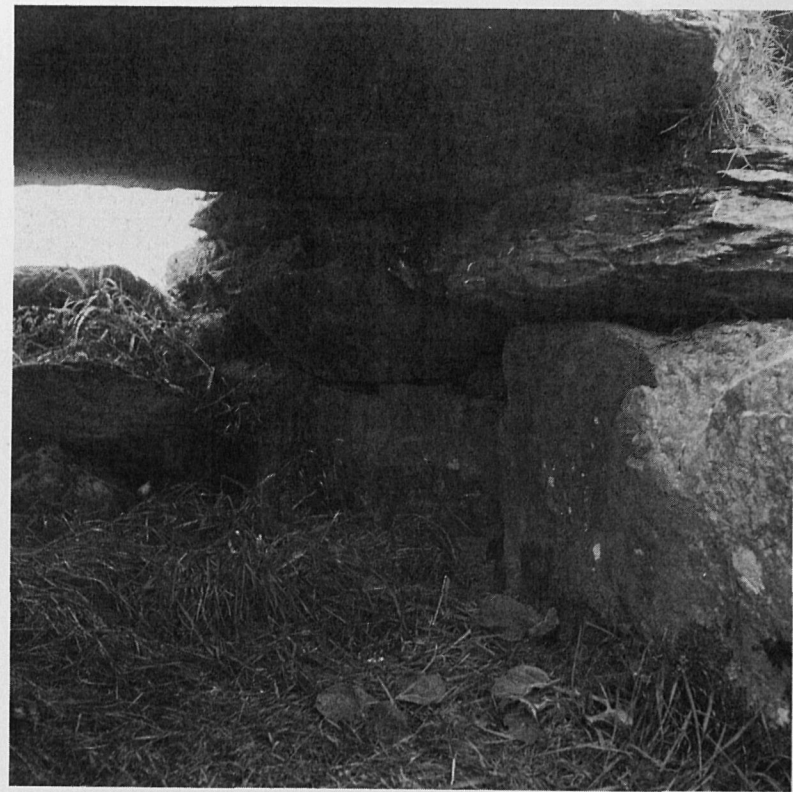


4. Knockcurraghboola Commons (Ti. 13), from West.

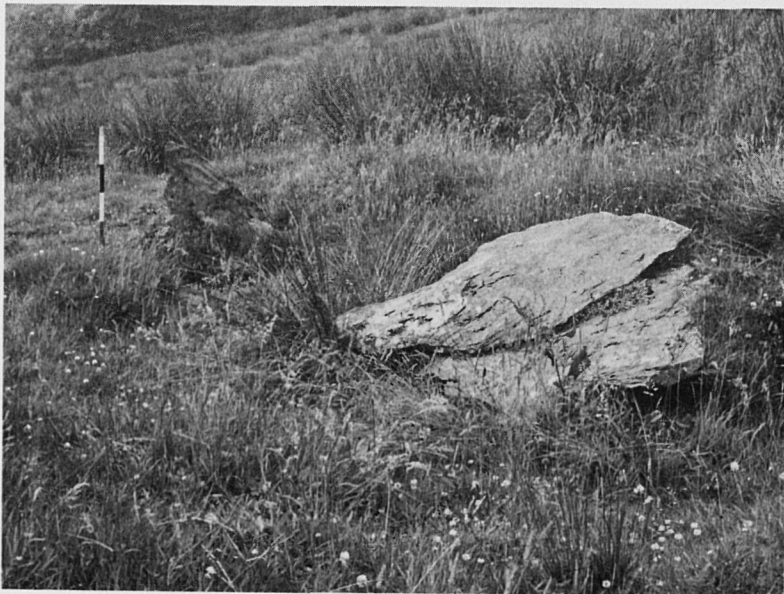




1. Knockshanbrittas, (Ti. 15), from West.



2. Knockshanbrittas (Ti. 15), Corbels on north side, from East.



3. Foilycleary (Ti. 16), from South.



4. Corderry (Ti. 17), from North.









