



1. Crowagh (Sl. 66). The entrance to the gallery, from North.



2. Crowagh (Sl. 66). The gallery from South.



3. Carrownaboll (Sl. 42), from North-East.



4. Carrowgilpatrick (Sl. 70), from South-West.

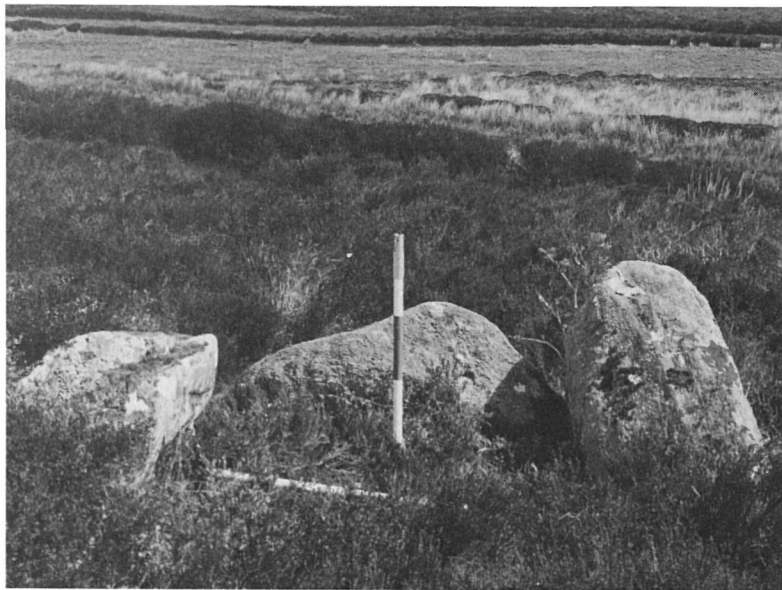




1. Tanrego West (Sl. 75). The entrance to the gallery, from East.



2. Tanrego West (Sl. 75). The dividing jambs and doorstone, from East.



3. Dunowla (Sl. 67), from West.



4. Corhawnagh (Sl. 77), from West.





1. Arnasbrack (Sl. 78). The entrance jambs (behind tree) with flanking courtstone, from East.



2. Carrownagh (Sl. 79), from South-East.



3. Castleore (Sl. 80), from West.



4. Carrowcrin (Sl. 81), from East.





1. Carrowculleen (Sl. 72), from East.



2. Knocktober (Sl. 82), from North.



3. Carricknagat (Sl. 83), from North-West.



4. Carricknagat (Sl. 84), from West.







1. Cabragh (Sl. 86), from South-East.



2. Cabragh (Sl. 86), from North.



3. Gortakeeran (Sl. 87), from West.



4. Gortakeeran (Sl. 87), from South-East.

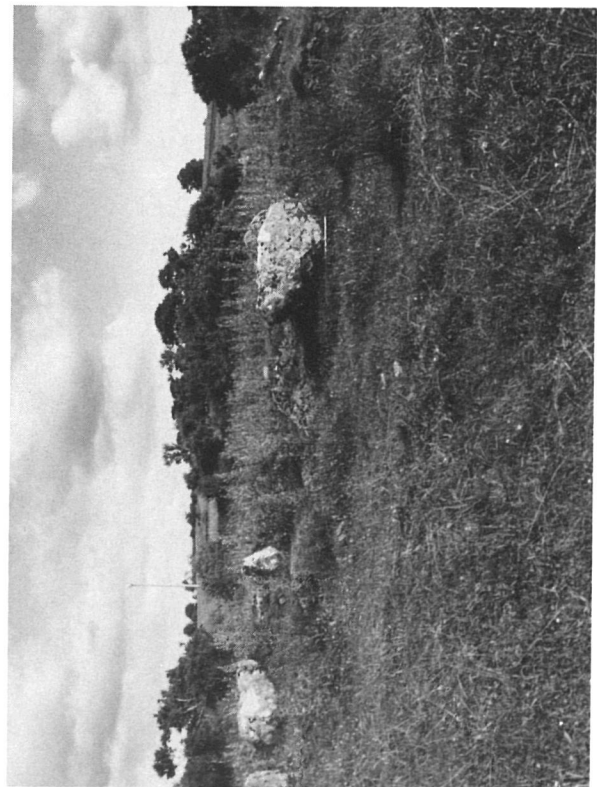




1. Gortakeeran (Sl. 88), from West.



2. Cabragh (Sl. 89). The south side of the gallery, from West.



3. Knockadoo (Sl. 90), from North-West.



4. Carrowmurray (Sl. 92), from North-West.





1. Carrownedan (Sl. 91) during course of demolition, from South.



2. Carrownedan (Sl. 91) during course of demolition, from West.



3. Carrownedan (Sl. 91). The portico area during course of demolition, from South.



4. Tawnamore (Sl. 85), from East.





1. Carrowmore (Sl. 94), from South-West.



2. Ballymurray (Sl. 93), from North-East.



3. Castlerock (Sl. 96), from North-West.



4. Cloondrihara (Sl. 97), from North-West.



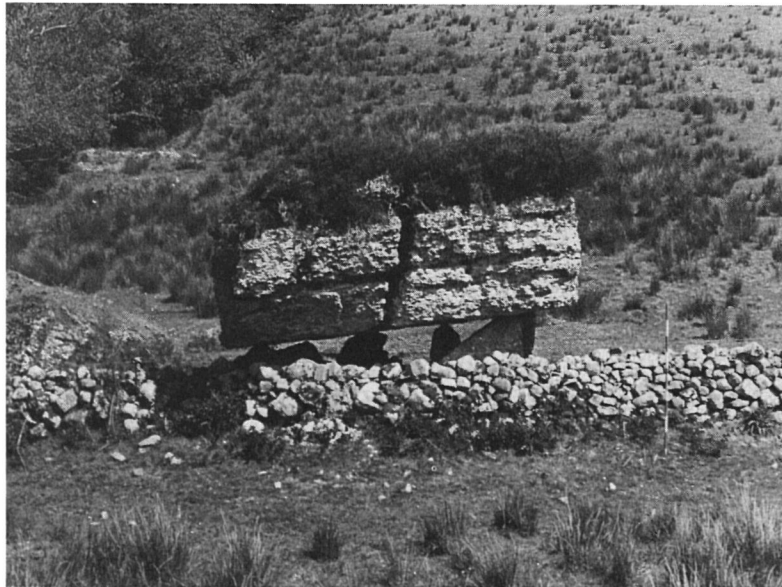




1. Sessuecommon (Sl. 95), from South-East.



2. Ballindoon (Sl. 101), from West.



3. Carrickglass (Sl. 102), from South-West.



4. Carrickglass (Sl. 102), from South-East.





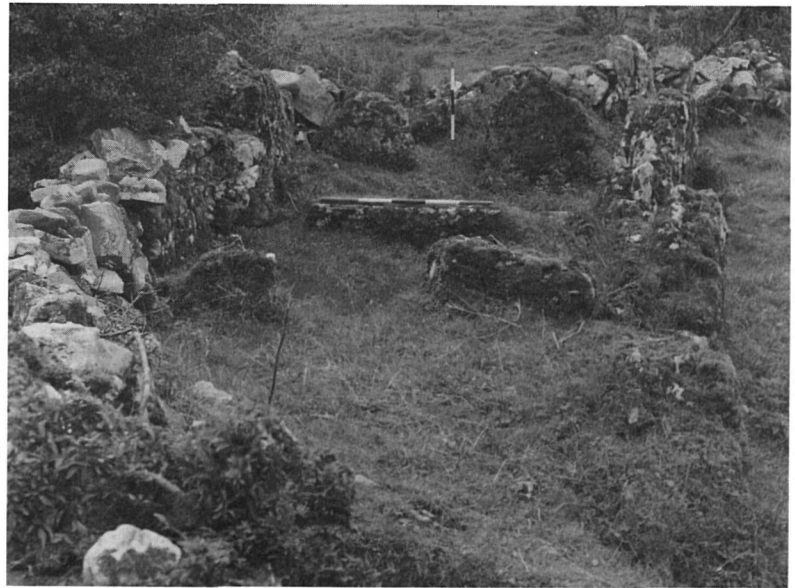
1. Moytirra West (Sl. 103), from West.



2. Barroe Upper (Sl. 104), from South-East.



3. Coolmurly (Sl. 105), from West.



4. Coolmurly (Sl. 106). The gallery from North.





1. Carrowreagh (Sl. 112), from South.



2. Carrowreagh (Sl. 112). Corbelling above north side of gallery, from South.



3. Carrowreagh (Sl. 113), from West.



4. Treanmore (Sl. 111), from South.





1. Moytirra East (Sl. 110). The front of the gallery, from South-West.



2. Moytirra East (Sl. 110). The back of the gallery, from North-East.



3. Culdaly (Sl. 114), from South-West. The two erect stones, in the foreground, at right do not form part of the original structure.



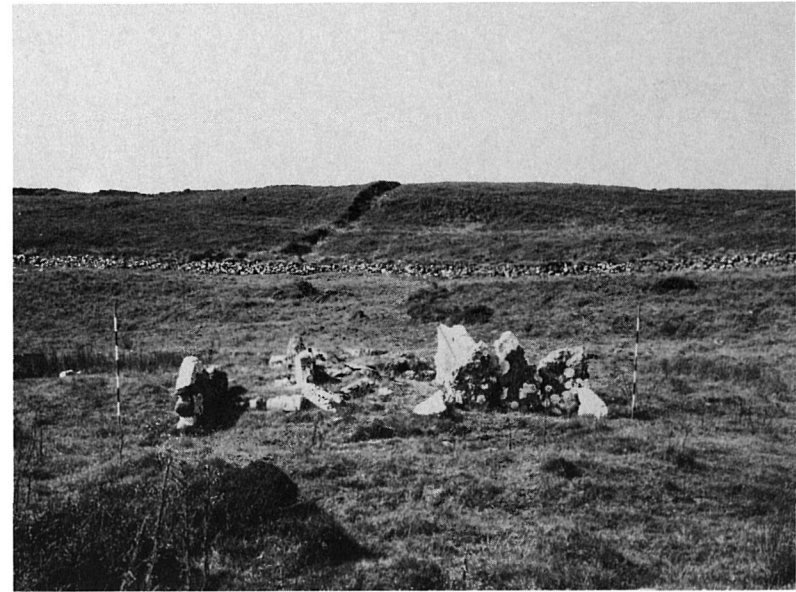
4. Culdaly (Sl. 114), from East.







1. Tobercurry (Sl. 117), from South-East.



2. Carricknahorna East (Sl. 121), from West.



3. Mullaghfarna (Sl. 119), from North-East.



4. Mullaghfarna (Sl. 119), from South-West.





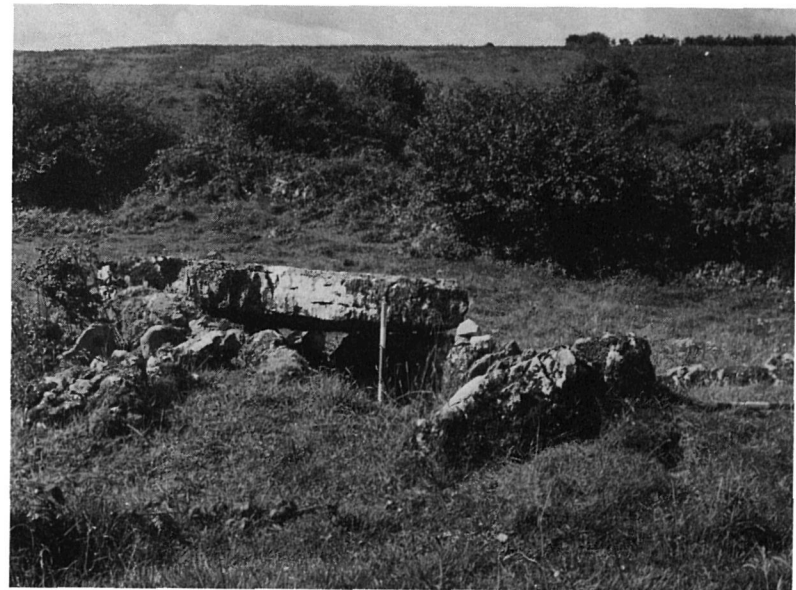
1. Carrowkeel (Sl. 120). The court and facade stone, from North-West.



2. Carrowkeel (Sl. 120). The court, from South.



3. Carricknahorna (Sl. 122), from East.



4. Ballinlig (Sl. 123), from East.





1. Kilfree (Sl. 125), from North-West.



2. Tawnymucklagh (Sl. 127), from North-West.



3. Letterbrone (Sl. 115), from North-East.



4. Tawnatruffaun (Sl. 128). The back of the gallery, from South.





1. Breeoge (Sl. 76), from North.



2. Breeoge (Sl. 76), from West.



3. Carrownaleck (Sl. 98), from West.



4. Springfield (Sl. 99), from East.







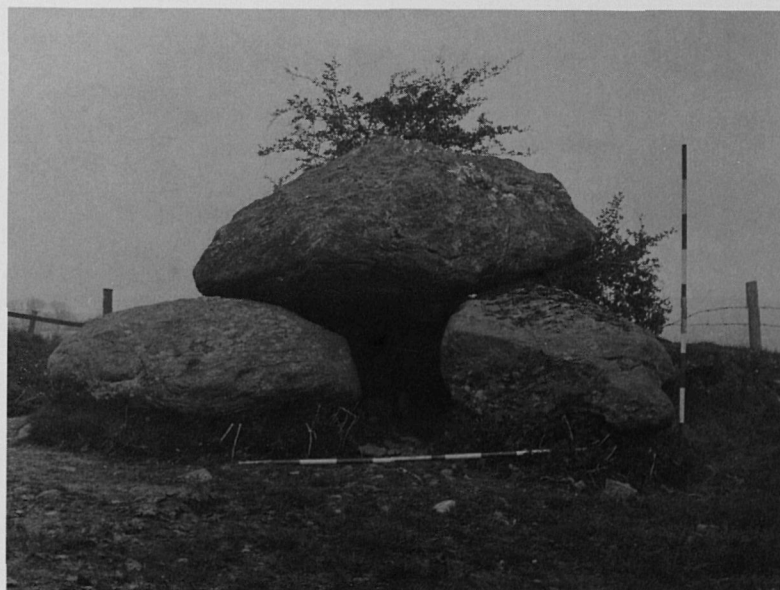
1. Cams (Sl. 100), from South-West.



2. Clough (Sl. 17). The entrance to the gallery, from East. Reproduced from Sligo Field Club collection.



3. Knockatotaun (Appendix No. 22), from North-East.



4. Achonry (Appendix No. 23), from South-East.





